



FORCE II

Installation Instructions 817757 2017-2025 FORD F-250/ F-350 6.2L, 6.8L & 7.3L ENGINE 2/4 WD & All Wheelbases

OVERVIEW:

1. Take a moment to read and understand these instructions before installing your Flowmaster performance system.

NOTE: Please inventory all parts now before continuing and if necessary, report any missing items to our tech line. This will avoid potentially stranding your vehicle until any missing replacement parts arrive.

ITM #	PART #	DESCRIPTION	QTY.
1	26732S	Inlet Pipe	1
2	8530572-226	Muffler	1
3	26733S	Right Tailpipe	1
4	26734S	Left Front Tailpipe	1
5	26735S	Left Rear Tailpipe	1
6	26484S	Side Exit Pipe	2

PRE-REQUISITE PARTS NEEDED: If your truck doesn't have overload springs, purchase M10 - 1.5 bolts (x2) for step 9.

ITM #	PART #	DESCRIPTION	QTY.
7	26485S	Rear Exit Pipe	2
8	ST462	Tip	2
N/A	PK967	Hardware Pack includes:	1
9	503HA	Left Rear Hanger	1
10	MC300BS	Stainless Band Clamp	7
11	HA168	Rubber Hanger- Red	1
12	HW502	7/16" Hanger Keeper	2
13	HW503	1/2" Hanger Keeper	1
14	HW505	15" Zip Tie	1

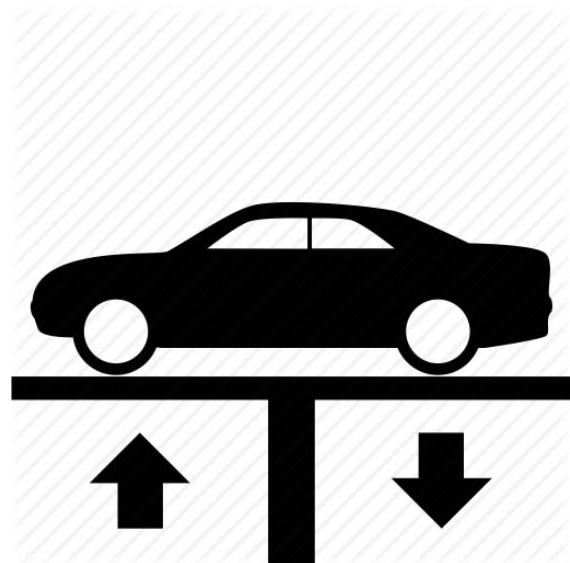
REMOVE STOCK EXHAUST SYSTEM:

2. Raise vehicle up on a hoist or rack to working height. If you don't have access to a hoist or rack, support vehicle with jack stands.

WARNING: Avoid serious burns! Allow your vehicle time to cool completely before touching any factory engine components.

To ease preparation and installation of your new kit:

- Apply penetrating lubricant to mounts, bolts and clamps before you remove them.
- Use stands as necessary to support parts as you detach them from your vehicle and again as you install new parts.



3. Cut tailpipe at muffler exit. Disassemble hanger wires from isolators and remove tailpipe section from vehicle.



4. Disassemble wire hangers from isolators on vehicle, loosen clamp at muffler inlet connection then remove muffler and set aside.

NOTE: The factory resonator unit(s) forward from muffler is not replaced with new system so will remain in place.



INSTALL FLOWMASTER EXHAUST SYSTEM

5. Remove nuts from stock and Flowmaster clamps, apply anti-seize compound to bolts and re-install nuts.

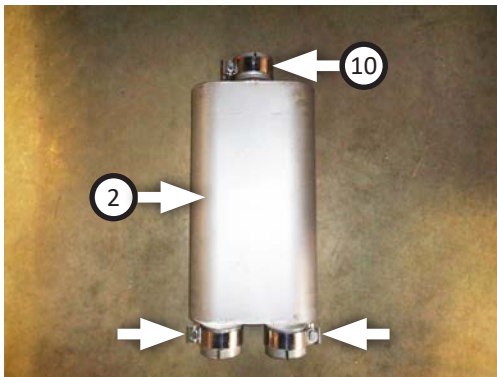
NOTE: The image in this step is intended for illustrative purposes only and may or may not accurately reflect components included in your kit.



6. Place **clamp (10)** onto **inlet pipe (1)** then connect it to factory pipe by lining up notch on slip fit with tab on factory pipe. Insert wire hangers into mounts then tighten clamp just enough to allow for adjustment.

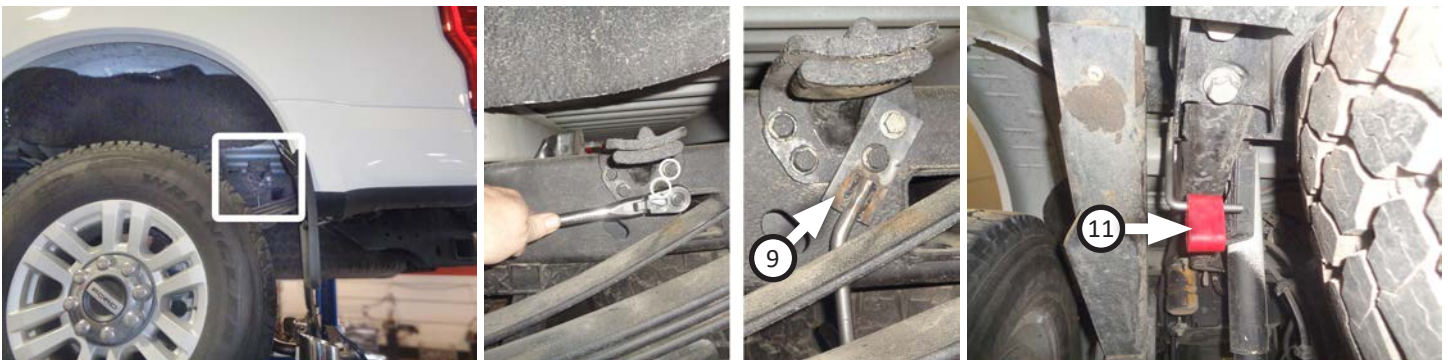


7. Place (x3) **clamps (10)** onto **muffler (2)** then connect it to inlet pipe. Tighten clamp just enough to allow for adjustment.

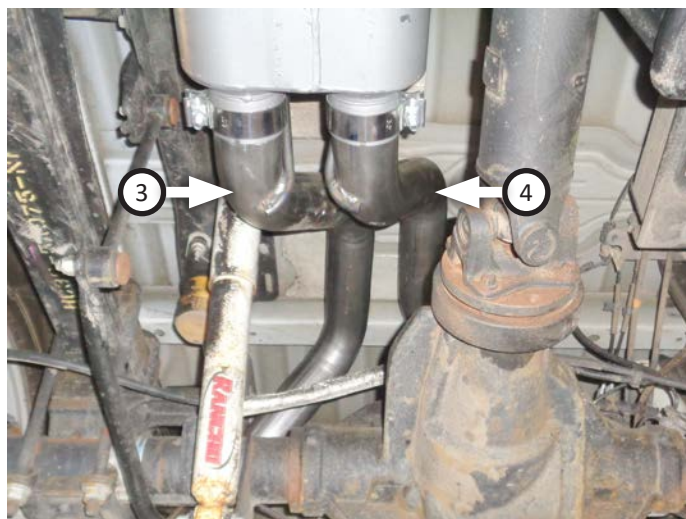


8. Remove bolts (x2) indicated below and use them to secure **left rear hanger (9)** onto vehicle frame. Then install **rubber hanger (11)** as shown.

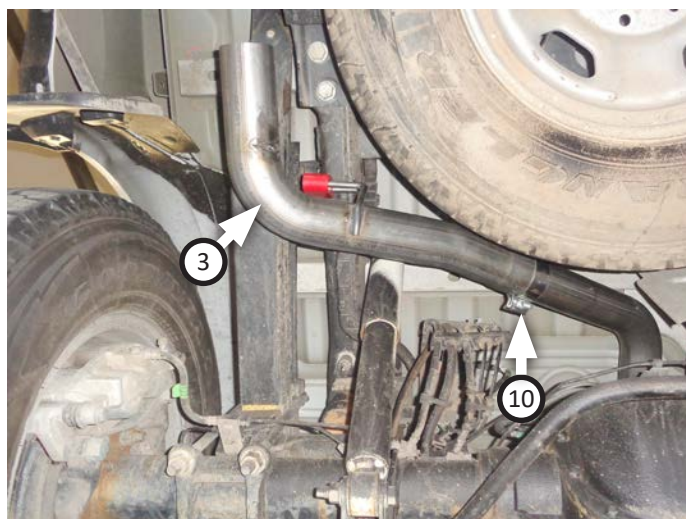
NOTE: If your truck does not have overload springs, secure left rear hanger using pre-requisite M10 - 1.5 bolts (x2).



9. Route **right (3)** and **left front (4)** tailpipes over axle then connect them to muffler. Insert their wire hangers into isolators then tighten clamps just enough to allow for adjustment.

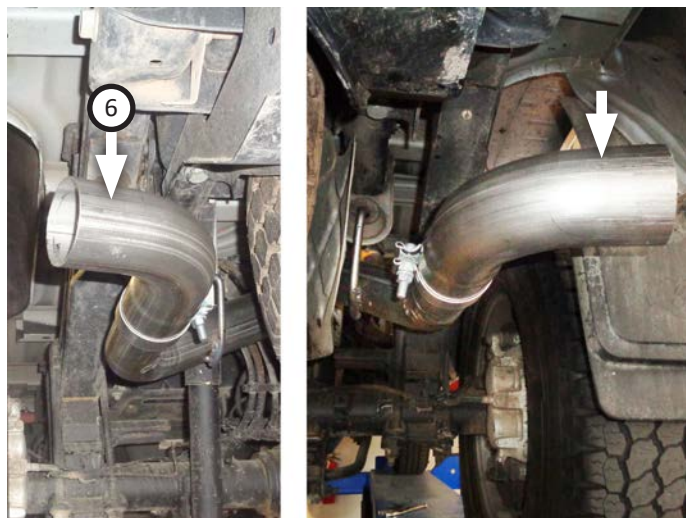


10. Place **clamp (10)** onto **left rear tailpipe (5)** and connect it to left front tailpipe. Insert wire hanger into isolator and tighten clamp just enough to allow for adjustment.

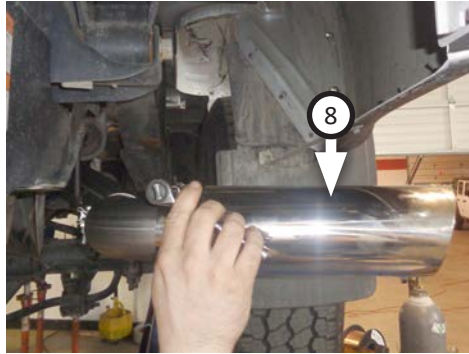
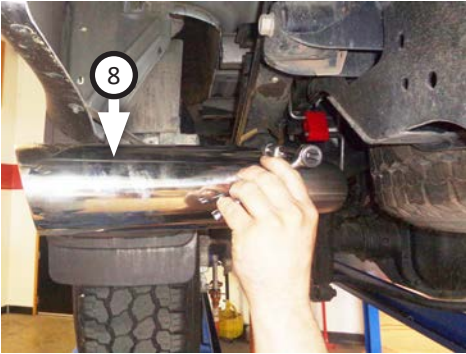


11. Place (x2) **clamps (10)** onto tailpipes then connect (x2) **side exit pipes (6)** to them.

NOTE: This kit includes both side and rear exit pipes. A side exit is preferable for towing purposes, to avoid blowing fumes in or on vehicles you may be towing (eg: RV trailer, boat, etc). Otherwise, use **rear exit pipes (7)** in place of side exit pipes.



12. Install (x2) **tips (8)** onto side or rear exit pipes then tighten their inlets just enough to allow for adjustment.
13. Use **zip tie (14)** to secure hose assembly away from exhaust pipe as shown.



14. Adjust exhaust components for fit; maintaining $\frac{1}{2}$ " clearance and compensating for suspension, travel and vibration, then tighten all clamps. Finally, fit (x2) $\frac{3}{16}$ " (12) and $\frac{1}{2}$ " (13) **hanger keepers** onto each sideways hanger.
15. Recommended: Secure slip-fit connections with a 1-inch tack weld then spray high-temp paint over each weld to prevent rust and premature corrosion.



Congratulations, the installation of your FLOWMASTER performance exhaust system is now complete!





FORCE II

Installation Diagram

817757

2017-2025 FORD F-250/
F-350 6.2L, 6.8L & 7.3L ENGINE
2/4 WD & All Wheelbases

